

# Newsteo Collector

*Bidirectional gateway*

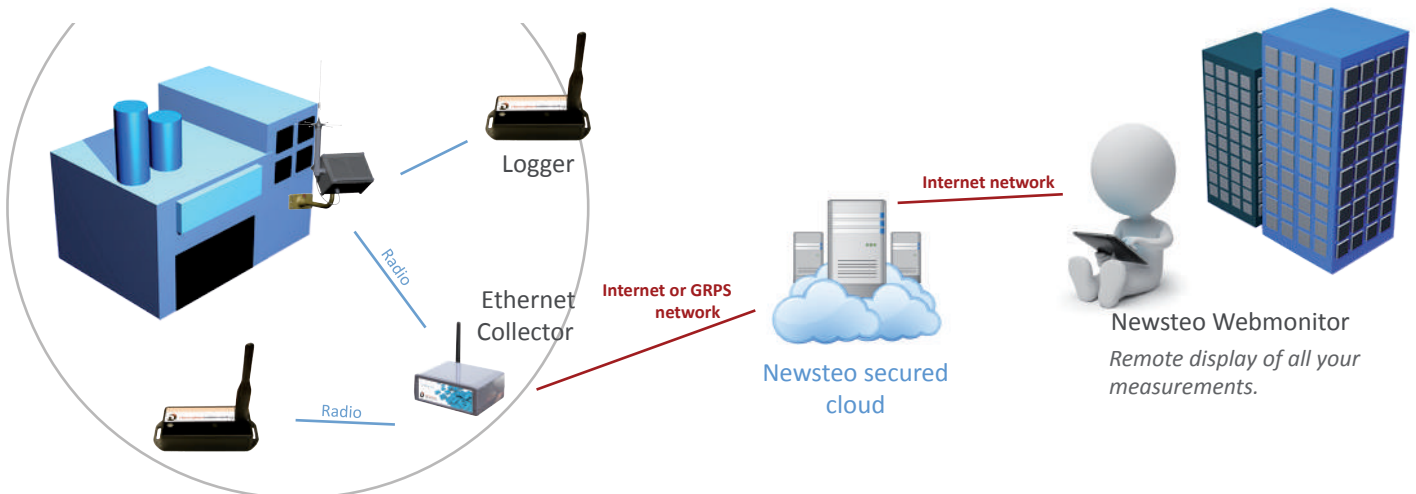


Radio to Ethernet  
or to GPRS gateway for  
Newsteo data loggers.

The Newsteo collector allows remote collection of data, through Ethernet or GPRS, coming from several Newsteo loggers and storage on a remote secured server:

- The user doesn't need to go to the place where the loggers are to download all the measurements taken.
- AC Power supply or battery (with solar panel).
- Perfect for big areas, outdoor or indoor setup, depending on the models.
- Bidirectional transmission : data reception and remote monitoring of all the loggers (Loggers settings, changes of measurements frequency...).
- Measurements display on PC at the office, on tablet at home or on smartphone.

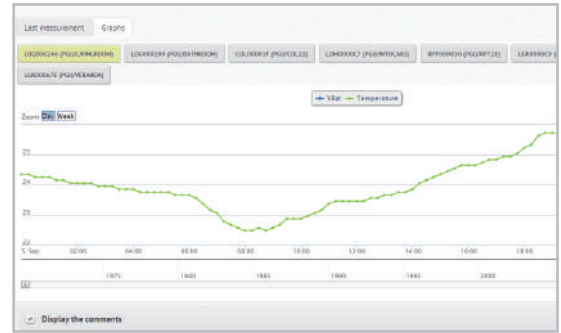
## Functioning






- The Logger equipped with a sensor takes the measure and transmits it by radio to the Collector,
- The collector transmits the measurements through Ethernet (IP) or GPRS to a central database,
- A real-time alert can be sent anywhere to the supervisor,
- The supervisor can access at any time to the measures, via Internet on the Newsteo server or on his own server.

# Newsteo WebMonitor

- Web application to access to the measures and remote monitoring of Newsteo devices,
- Available on Newsteo server,
- A software licence is needed to install Webmonitor on Customer server.



## PRODUCT CHARACTERISTICS

	PFPN-COL22-001	PFPN-COL11-001	PFPN-COL51-001
			
Application	Indoor Ethernet	Indoor GPRS	Outdoor GPRS
COLLECTOR-SERVER TRANSMISSION			
Transmission mode	Ethernet IPv4 - 100Mbps	GPRS (2.5G)	GPRS (2.5G)
GPRS antenna	N.A.	External supplied GPRS antenna	On board GPRS antenna
Subscription	ADSL subscription handled by customer	GPRS subscription + SIM card managed by customer or supplied by Newsteo	
DATA LOGGER – COLLECTOR TRANSMISSION			
Transmission mode	Radio ISM 868 MHz	Radio ISM 868 MHz	Radio ISM 868 MHz
ISM antenna	¼ wavelength antenna included (and replaceable)	½ wavelength antenna included (and replaceable)	High-range full wavelength antenna
Radio range	Several hundred meters, can pass through several walls	Several hundred meters, can pass through several walls	From 1 to several kilometers
OTHER FEATURES			
Embedded memory	60 000 measurements Can store the measurements in case of loss transmission with the server (ADSL cut, loss of GPRS network ...)		
Power supply	AC adapter included AC power connector (5V-48V DC input)	AC adapter included AC power supplied, micro-USB connector	1 individual solar panel, with 3 Lithium Ion 12Ah reloadable batteries. Autonomy of 14 days without sun.
IP level	IP30	IP30	IP67
Connectors	- RJ-45 for Ethernet (cable 100 Base-T needed) - Jack for power supply - SMA for radio antenna	- Micro-USB for power supply - SMA for radio antenna - FME for GPRS antenna	- SMA for radio antenna